

Technical Data Sheet



TECHNICAL DATA		
Product Type	Curved edge two layer engineered hardwood flooring - QCXE	
Reaction to Fire	EN 14342:2013 Table 1	D _{fl} – s1
Emission of Formaldehyde	EN 14342	E1
Thermal Conductivity (W/m K)	EN 14342:2013 Table 2	0.16
Biological Durability	EN 335	UC 1
Moisture Content	EN 13183	8% ± 2%
Profile	Tongue and Grooved	
Surface Color	DIN 68861-1A, DIN 53160, EN 71.3	OSMO POLYX®-OIL
Surface Protection	DIN 68861-1A, DIN 53160, EN 71.3	OSMO Hartwachs-Öl

GEOMETRICAL CHARACTERISTICS (FIG 1)		
Position	Value	Tolerance
A	17.5 mm	±0.5 mm
B	5.5 mm solid wood	±0.5 mm
C	12 mm birch plywood	±0.5 mm
D	6 mm	±0.5 mm
E	6 mm	±0.5 mm
F	1.5 mm	±0.2 mm
G	1 mm	±0.2 mm
H	According to layout	±1 mm
Length	According to layout	±1 mm
Lipping		≤0.3 mm
Weight	13.25 kg/m ²	±0.055 kg

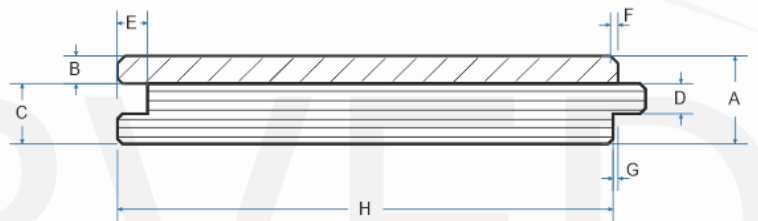


FIG 1

GEOMETRICAL CHARACTERISTICS (FIG 2)		
Position	Value	Tolerance
A	13.5 mm	±0.5 mm
B	4.5 mm solid wood	±0.5 mm
C	9 mm birch plywood	±0.5 mm
D	4.5 mm	±0.5 mm
E	5 mm	±0.5 mm
F	1.5 mm	±0.2 mm
G	1 mm	±0.2 mm
H	According to layout	±1 mm
Length	According to layout	±1 mm
Lipping		≤0.3 mm
Weight	10.23 kg/m ²	±0.04 kg

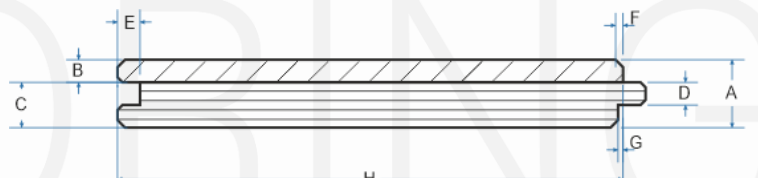


FIG 2

INSTALLATION	
Glue Down:	the appropriate installation method. Full bond RECOMMENDED using the Wakol MS 228 flexible adhesive for gluing to wood subfloor surfaces, and Wakol PU 385 for gluing to concrete subfloor surfaces.
Secret nailed:	Permissible depending on the subfloor and site conditions
	To be installed according to layout plan specified by the manufacturer.
	Compatible with self-regulating underfloor heating systems which must be operational before installation.

GUARANTEE ¹	
Light industrial:	5 years
Commercial:	5 years
Residential:	30 years

¹ Subject to terms see website.